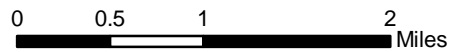
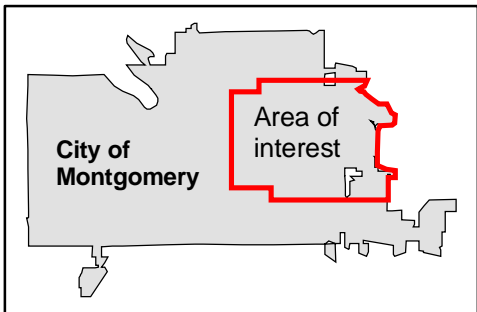
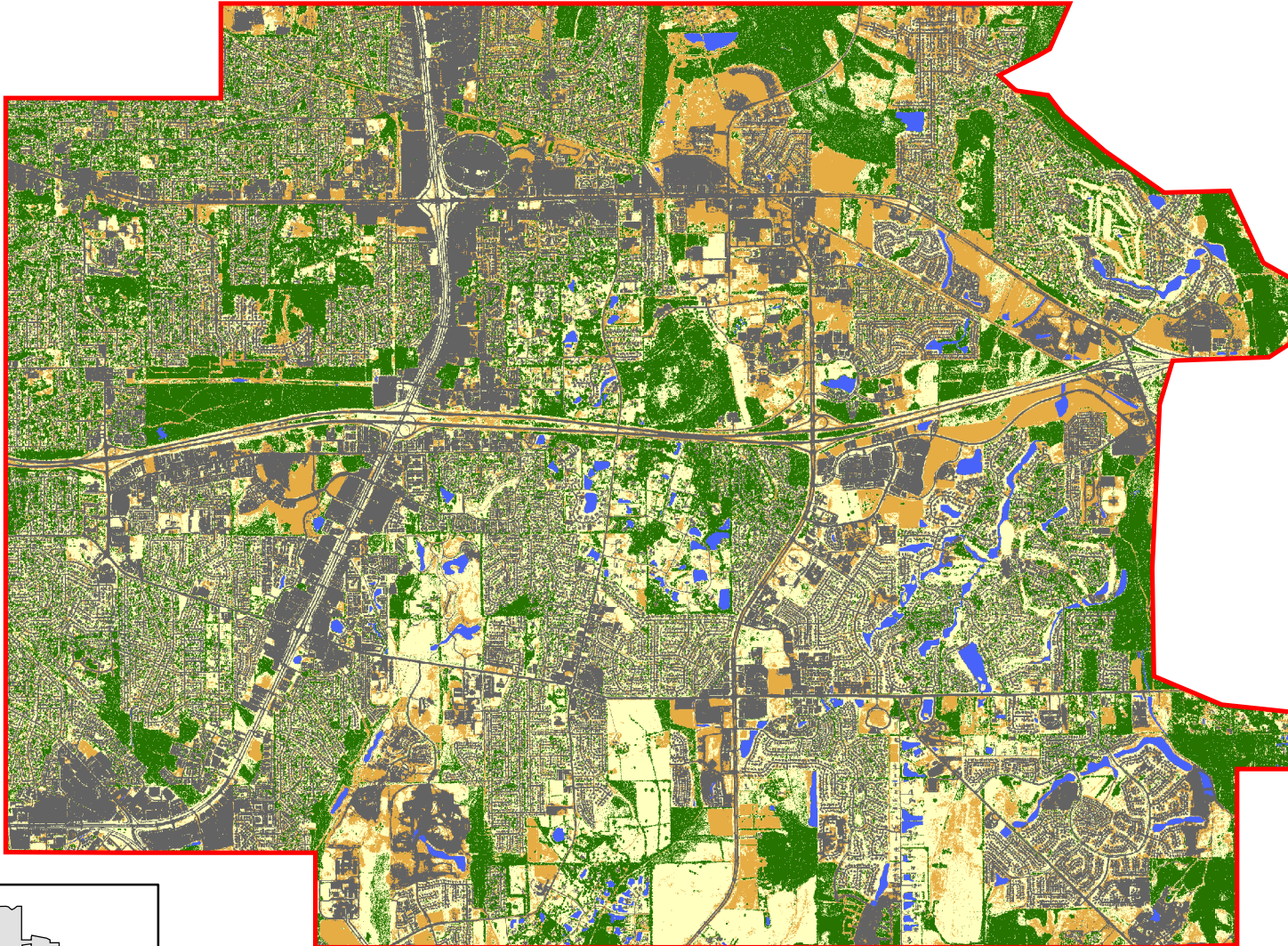


2006 Landcover* Montgomery, Alabama Area of Interest



*This data was obtained by Ikonos
1-meter pixel resolution.

Source: American Forests
and city of Montgomery

Legend

- | | |
|------------------|--------------------------------------|
| Trees 24.1% | Open Space 28.1% |
| Bare Soil 13.7% | Water Area 1.7% |
| Impervious 32.4% | Montgomery Area of Interest Boundary |

